



## 30 Beaker Place, Milton, Oxon, Oxon, OX14 4FR

£1,950 PCM - 1st August 2026.

- DETACHED 3 BEDROOM HOUSE
- GARAGE & DRIVEWAY
- CLOSE TO MILTON PARK/HARWELL
- EPC RATING B
- COUNCIL TAX E

## 30 Beaker Place, Oxon OX14 4FR

Three bedroom, detached house located on the edge of popular Milton village within easy distance of Milton Park, A34, Didcot town centre and railway station. Comprises of three good size double bedrooms, ensuite double shower to bedroom one, family bathroom with hand held shower over bath. Kitchen/dining room overlooking the garden, to include gas hob, electric oven, fridge/freezer, dishwasher, washing machine. Sitting room with laminate flooring, downstairs cloakroom. Gas central heating, all UPVC, good size garden. Single garage and driveway.

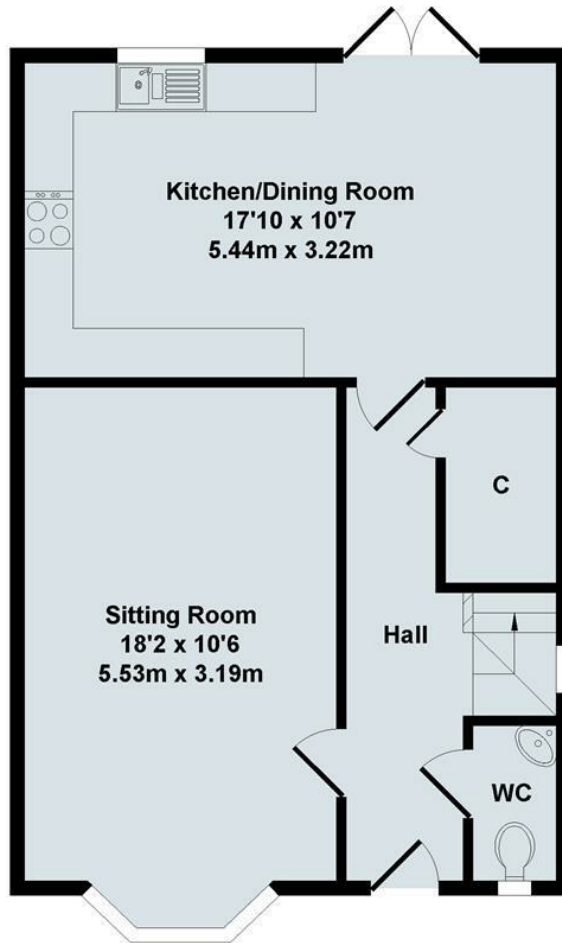


Council Tax Band: E

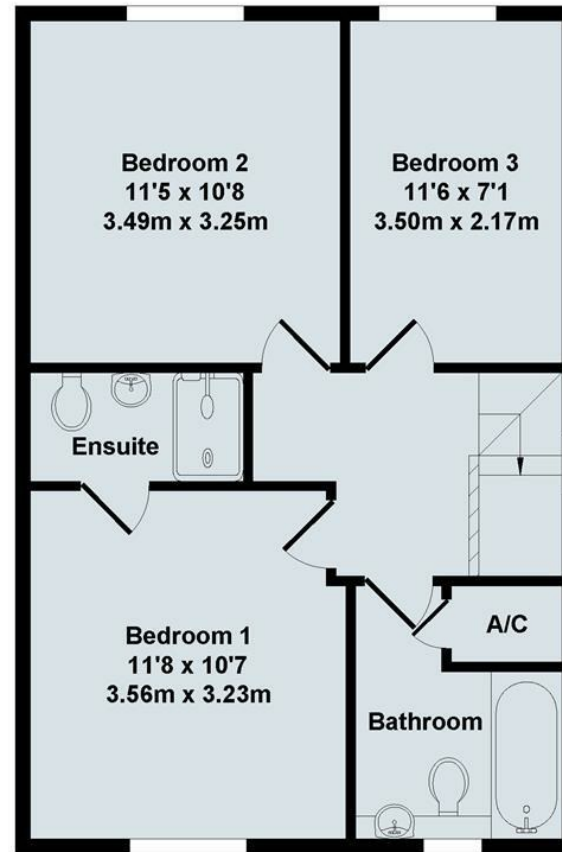




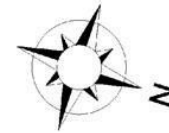




Ground Floor

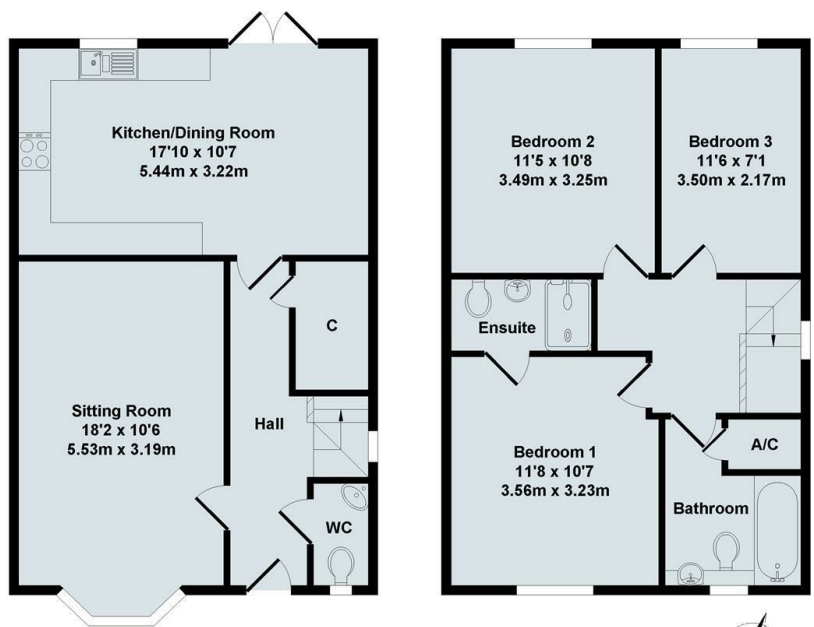


First Floor



**Total Approx. Floor Area 987 Sq.Ft. (91.70 Sq.M.)**

All items illustrated on this plan are included in the "Total Approx Floor Area"



Ground Floor

First Floor



Total Approx. Floor Area 987 Sq.Ft. (91.70 Sq.M.)

All items illustrated on this plan are included in the "Total Approx Floor Area"



## Directions

## Viewings

Viewings by arrangement only. Call 01235 514267 to make an appointment.

## Council Tax Band

E

Energy Efficiency Rating		
	Current	Potential
<i>Very energy efficient - lower running costs</i>		
(92 plus) <b>A</b>		
(81-91) <b>B</b>		
(69-80) <b>C</b>		
(55-68) <b>D</b>		
(39-54) <b>E</b>		
(21-38) <b>F</b>		
(1-20) <b>G</b>		
<i>Not energy efficient - higher running costs</i>		
<b>England &amp; Wales</b>	EU Directive 2002/91/EC	